

THE REGEN GROUP WITH OCEANSAFE



SUSTAINABLE HOUSING KITS



THE REGEN GROUP

ABOUT THE REGEN GROUP

□ www.TheReGenGroup.com



- **The REGEN Group** provides a diverse set of design + Engineering skills to meet the high standards involved with truly sustainable buildings.
- Our services range from engineering, architecture, construction, design, planning, and interiors. We are focused on making global sustainability a reality in normal everyday life.



THE FUTURE TODAY



- Sustainable Home Kits: Off-Grid, Net-Metered and Grid-Tied Models
- Envelope, Windows, Doors, Trim, Veneers, Appliances and RE System
- Super Green Materials, Engineered and Delivered Ready-to-Build On Your Site
- Compact Energy-Efficient Design
- Ease of Construction = low tech, hand labor tools
- Known Performance in Advance, Durable for Generations



COMPARE HOUSING TYPES

- BUILT IN PLACE homes provide for easily customizable dwellings, the big unknown is how the customization will perform once its built? The “Sustainable Housing Kit” solves this problem.



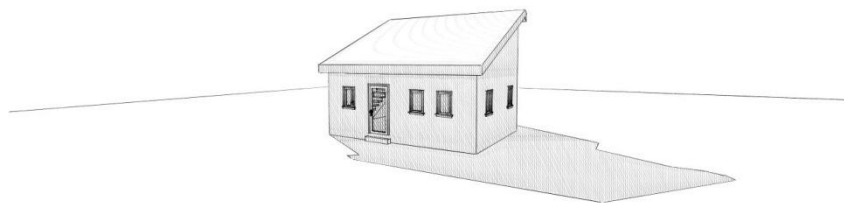
COMPARE HOUSING TYPES

- ❑ MODULAR homes are traditionally cheap, and easy to replicate and place on site, but they often do not provide quality housing. Modular housing is a poor option for developing countries or recovery zones because they lack the ability to address long term sustainability issues.



COMPARE HOUSING TYPES

- OUR SUSTAINABLE HOME is a kit house.
- All of the components arrive in a shipping container ready to be assembled on site. This allows for flexibility in features and options while also providing for growth in the local labor force. Jobs creation in assembly, and skills training prepare a workforce for a future in the construction industry.



HOUSING POWER OPTIONS

Sustainable Home Kits come in three levels

- Passive Survivability: Grid/Utility ready, yet able to light, heat, cool, de-humidify and ventilate itself passively even if no off-site energy resources are available.
- Sustainable Home: is capable of providing for all of its needs on a regular basis. No grid connection required
- Regenerative: This home provides more energy resources than it needs allowing it to help support secondary activities.

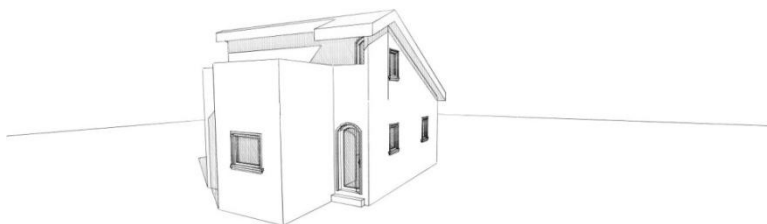
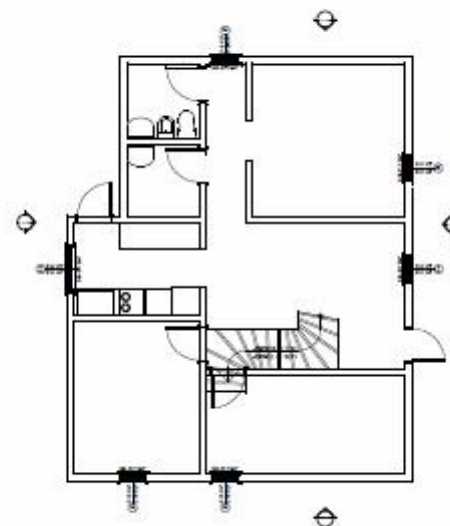


PASSIVE SURVIVEABILITY

This is the base housing model capable of supporting 1 adult and/or 1 child.

Grid Ready, 600 sq ft Base Kit Includes:

- ❑ 1KW Solar/Wind/Gen System
- ❑ Solar Hot Water
- ❑ High Efficiency Envelope
- ❑ Bath and Kitchen Fixtures
- ❑ Energy Star Appliances
- ❑ Price Tag: \$99K-USD/10K Units.

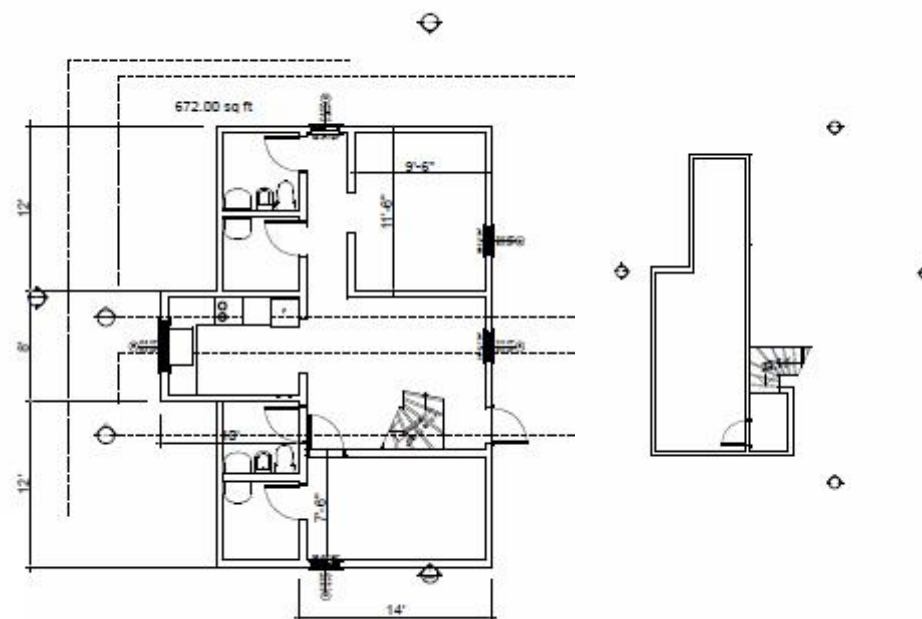
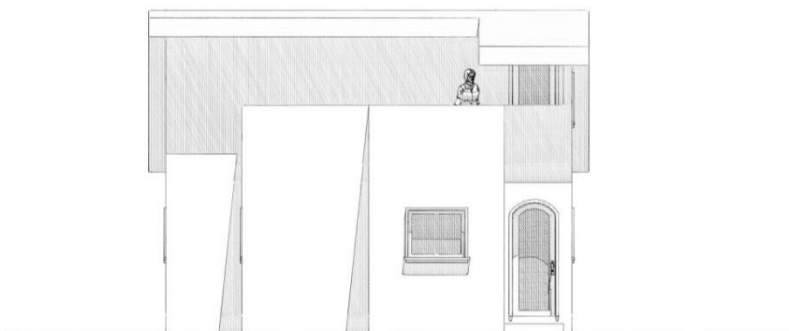


SUSTAINABLE HOME

This is the mid range housing model capable of supporting 2 adults and 1 children.

800 sq ft Base Kit includes:

- ❑ 2.5KW Solar/Wind/Gen System
- ❑ Solar Hot Water
- ❑ High Efficiency Envelope
- ❑ Bath and Kitchen fixtures
- ❑ Energy Star Appliances
- ❑ Price Tag: \$129K-USD/10K Units.

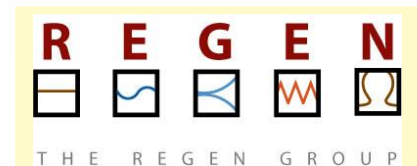
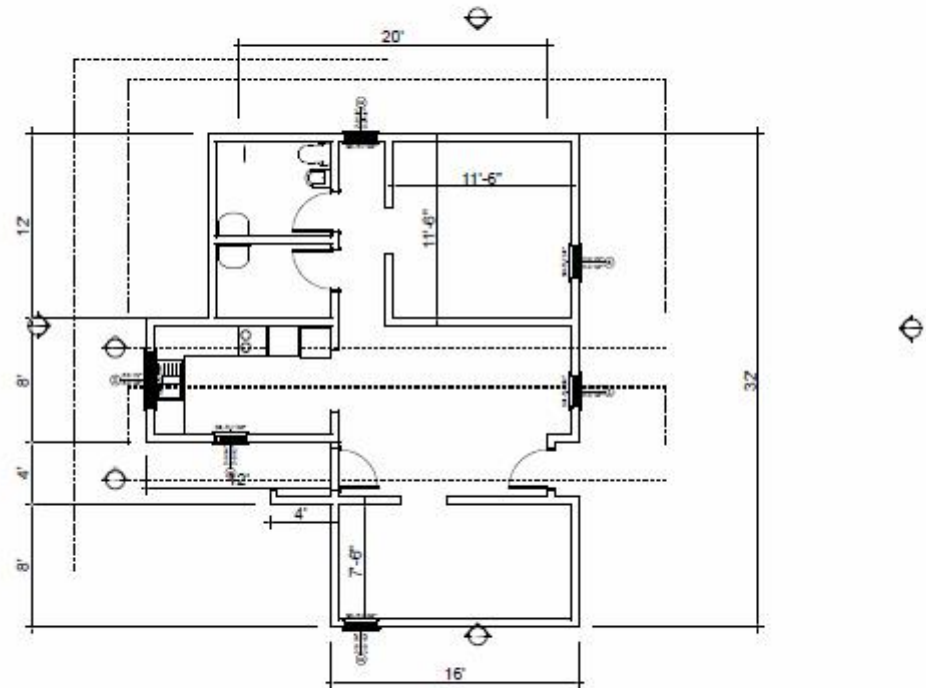


REGENERATIVE HOME

This is the premium housing model capable of supporting 3 adults and 3 children.

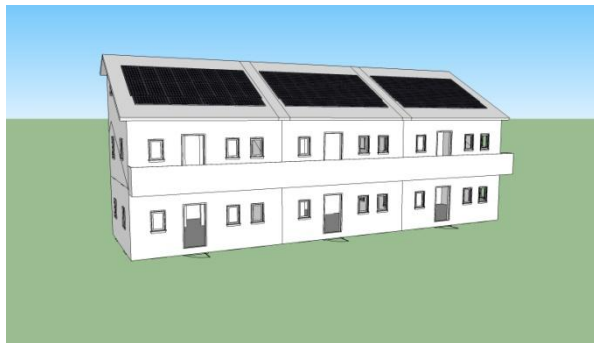
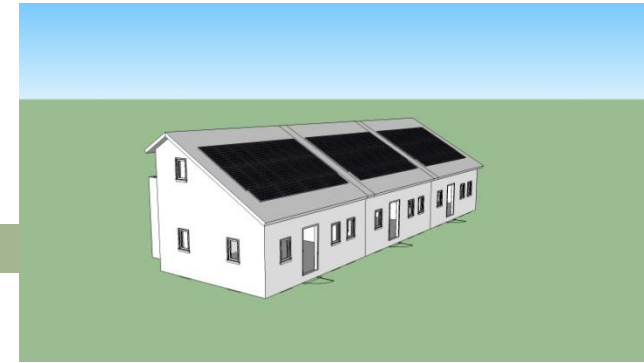
1,000 sq ft Base Includes:

- ❑ 5 KW Solar/Wind/Gen System
- ❑ Solar Hot Water
- ❑ High Efficiency Envelope
- ❑ Bath and Kitchen Fixtures
- ❑ Energy Star Appliances
- ❑ Rainwater Catchment
- ❑ Price Tag: \$140K-USD/10K Units.



CONFIGURATIONS

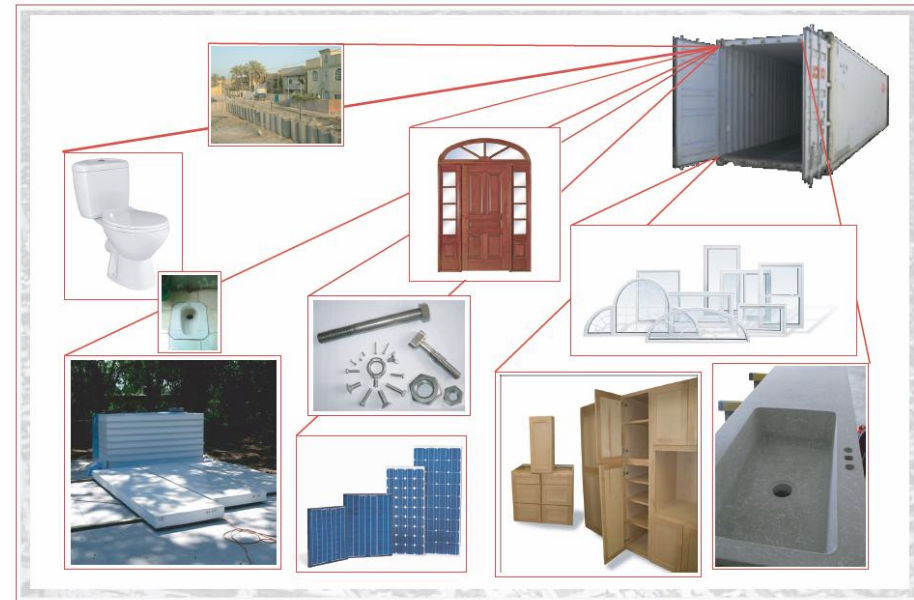
- ❑ SINGLE FAMILY
- ❑ TOWN HOUSE
- ❑ APARTMENT COMPLEX
- ❑ MULTI STORY



MATERIALS

- ❑ OceanSafe Wall and Roof Panel Envelope
- ❑ Full Function Electrical System
- ❑ CMU Interior Walls
- ❑ Windows, Doors & Lights
- ❑ Bath & Kitchen Fixtures
- ❑ Trim and Fittings
- ❑ Appliances & Electronics
- ❑ Full Construction Plans
- ❑ Options:
 - Foundations
 - Inter/Ext Finishes
 - Sat/Net/TV Com's
 - Tools/H2O Storage

 OCEANSAFE[™] HI-PERFORMANCE GREEN BUILDING SYSTEM
SUSTAINABLE HOUSING PROPOSAL FOR IRAQ



Sustainable House Kit Includes All Necessary Materials For Home Construction: Items Shown Are Representative Only

REGEN
THE REGEN GROUP

 OCEANSAFE[™]
HI-PERFORMANCE GREEN BUILDING SYSTEM

REGEN
THE REGEN GROUP

High Performance Wall Systems

- OceanSafe High Performance Homes are up to 72% Energy Efficient,
- Oceansafe Rated: 200mph Wind, 6.0R Seismic, Zero BFR Penetrations @ 50 ft
- SSIPS are Guaranteed with a Fully Renewable Warranty (10 year, 25-yr w/Maintenance Agreement)
- OceanSafe Homes are Structurally Tight and virtually Dust and Mold Free



OCEANSAFE[®]
HI-PERFORMANCE GREEN BUILDING SYSTEM



OCEANSAFE PANEL ASSEMBLY

 **OCEANSAFE** HI-PERFORMANCE GREEN BUILDING SYSTEM **SUSTAINABLE HOUSING PROPOSAL FOR IRAQ**

Panels are delivered on site pre-cut to the building's specs



Walls are installed beginning at the corners



Panels can be installed on a slab or an elevated floor system



Roof panels are installed, connected, and sealed



Wind resistant windows and doors are installed.



Tools & Equipment
You will need to have on hand a circular saw with regular blades and steel blades (we recommend an evolution saw), 45 degree saw, a sawzall, hammer, battery powered drill, 1/4" x 6" concrete bits, 1/2" hex driver bits, regular square and adjustable square, 6 ft. level, putty knife, sealant gun, metal scissors, scaffolding, and ladders.

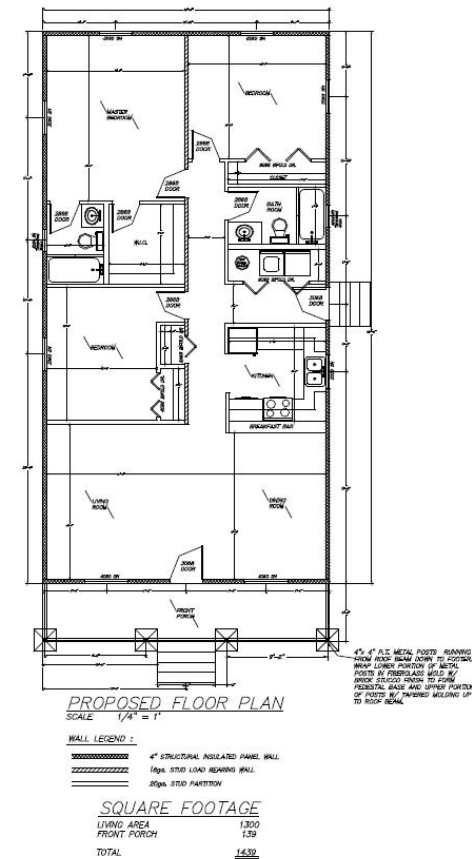
Sustainable House Kit Construction: Items Shown Are Representative Only

OCEANSAFE IN NEW ORLEANS



The Habitat
400 18th St. Lakeview
New Orleans, LA

High Performance Green for a
New Age of Hope and Confidence



HIGH PERFORMANCE ENVELOPE

Locked together to form a tight seal. Insulated to ensure exceptional energy efficiency and performance



- OceanSafe High Performance Commercial and Residential Structures are Assembled on Site using Steel Structural Insulated Panels (SSIPs)

OPTIONS

□ INTERIOR DOORS

Interior Doors come in three options.

Louvered

Solid core MDF

Upgrade to solid wood door.



□ EXTERIOR DOORS

Exterior Doors come in three options

Insulated Steel Door

Upgrade with sidelights

Top of the line is wood clad insulated steel with sidelights and transom.



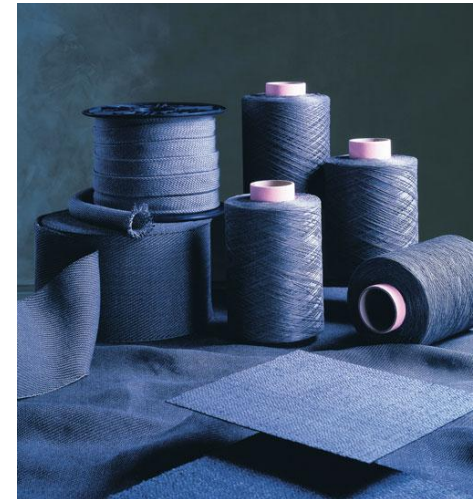
THE REGEN GROUP



OPTIONS

□ EXTERIOR OPTIONS

- Ballistic fiber reinforcements (BFR) are available upon request
- Multiple footprint and deck configurations available
- Underground water storage
- Sewage & Wastewater Treatment



OPTIONS

□ STANDARD WINDOWS

Standard windows include Low E, double glazed, vinyl, double hung windows. Energy Star qualified.



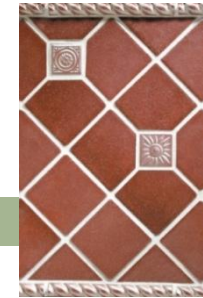
□ WINDOW UPGRADES

Window upgrades include upgrading to fiberglass, wood clad, and larger opening. Hopper windows also available for multi-opening functions.



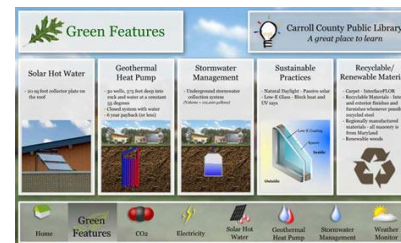
INTERIOR OPTIONS

- ❑ FLOORS
- ❑ WINDOW TREATMENTS
- ❑ FIXTURES
- ❑ FITTINGS



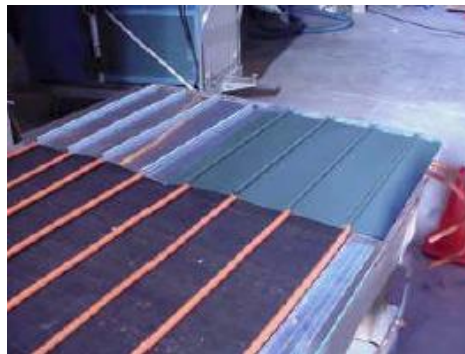
ELECTRONICS

- Home Energy Management Systems
- Programmable Thermostats
- Optional Satellite TV, Internet, and Phone Communications
- Optional Home Automation Systems



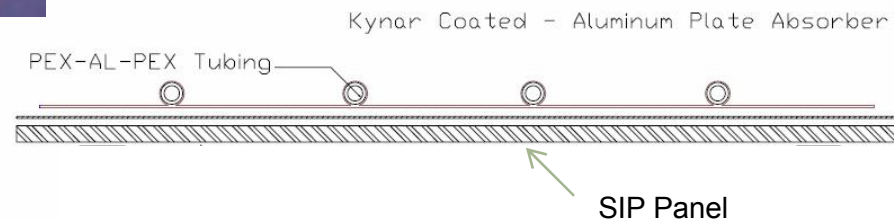
RENEWABLES

- Solar Hot Water: Our integrated hot water heater utilizes the heat collected by the metallic standing seam roof included in all models.

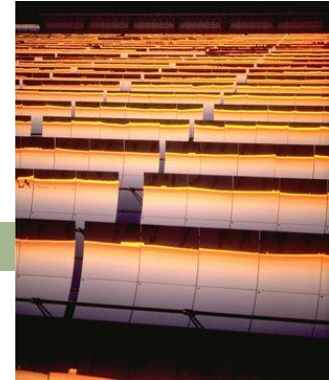


Collector Inlet Temperature	Metal RISA			
	Btu/day	Btu/ft ² /day	kWh/day	kWh/m ² /day
Low (35°C)	14,256	368	4.2	1.2
Intermediate (50°C)	2,067	53.4	0.6	0.2

UNDER ROOF CROSS SECTION



RENEWABLES



□ SOLAR ELECTRIC

Passive Survivability model- 1kw renewable package/ grid tied

Sustainable Home model- 2.5kw renewable package/ optional grid tie

Regenerative Home model- 4kw renewable package/ optional grid tie

□ Integrated Electrical System

All houses sold with wind/solar/gen combination package dependant on model + location.

□ BATTERY STORAGE

Passive Survivability model- 10kw battery storage/ grid tied

Sustainable Home model- 15kw battery storage/ optional grid tie

Regenerative Home model- 25kw battery storage/ optional grid tie



NEIGHBORHOOD DEVELOPMENT

- We also offer large scale community planning services; including shared renewable energy systems, energy storage, natural sewerage treatment, habitat creation and water collection and conservation.
- Community layout plans can help create efficiency and bundle services saving money for developers and home owners.



LOCAL JOB CREATION



- ❑ This facility is poised for jobs creation both in the United States and Abroad.
- ❑ High quality skilled labor jobs creation in the construction industry in Iraq.
- ❑ Industry boost for US and Foreign products while fulfilling severe housing shortage in Iraq
- ❑ Creating conservation awareness in Iraq.



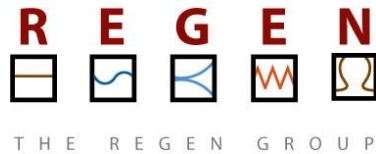
LOCAL BENEFITS



- New Market Tax Credits
- Value Added Facility
- Wide Market Reach: with units scalable to markets all over the world and markets in all socio-economic climates.



CONTACT



□ THE REGEN GROUP

Christophor Faust MSNE, EIT, LEED AP

christophor.faust@gmail.com

Stephanie Mezynski, BSA, LEED AP

s.mezynski@gmail.com

504.582.5050 office 504.582.5099 fax

720 Julia St NOLA 70130



□ OCEANSAFE

Vincent Basilice

vpb@oceansafeinc.com

504.812.5519 office